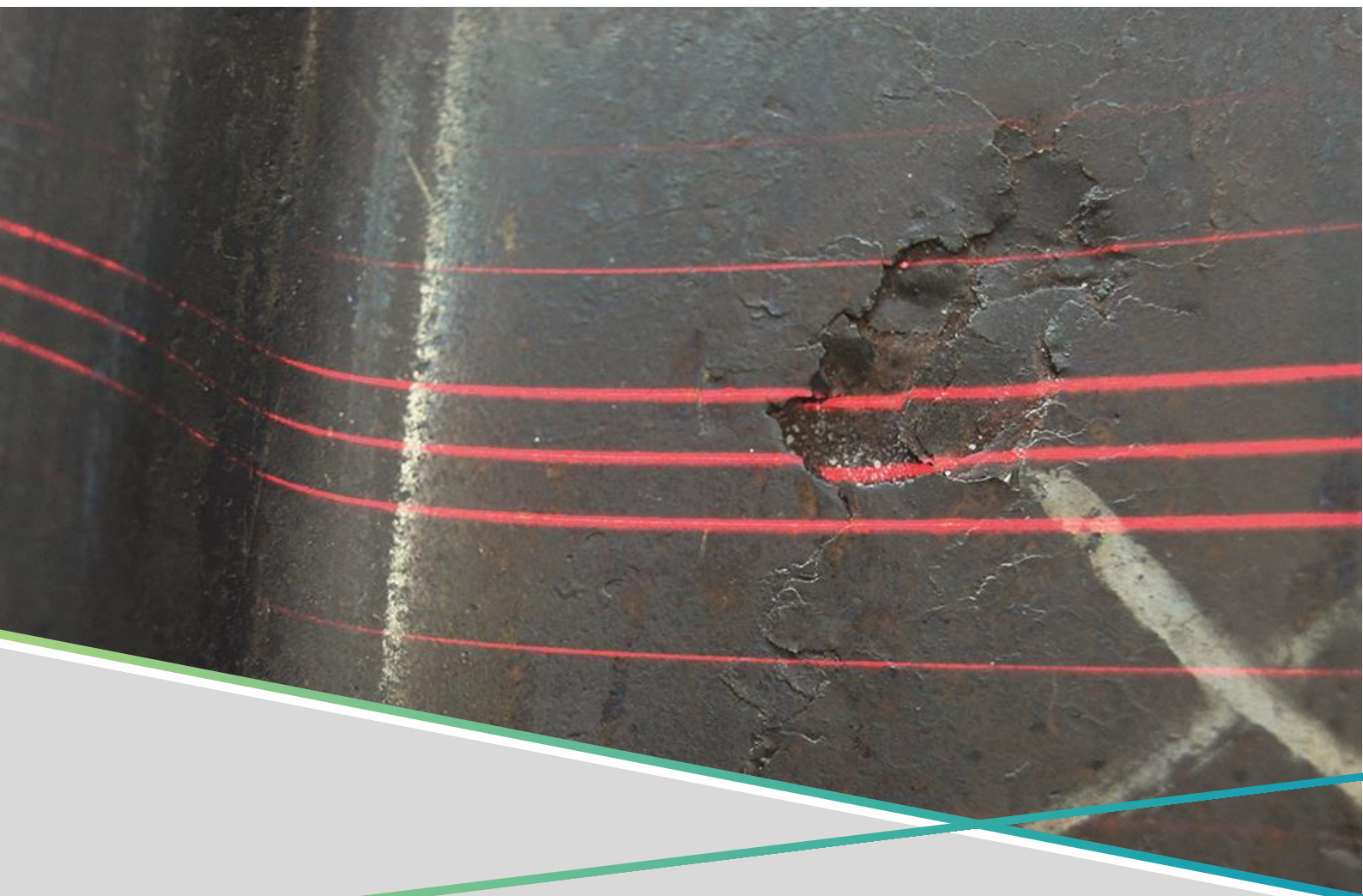


Measurement module “Defects”

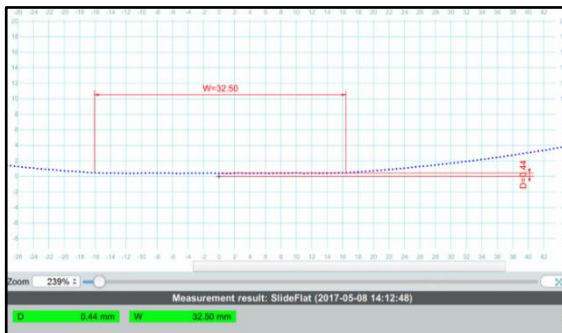




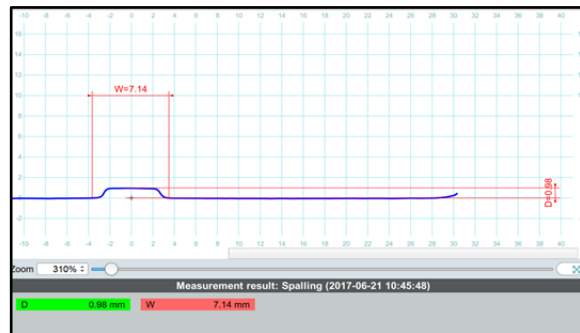
1 APPLICATION

The measurement module “Defects“ allows for the classification of defects on rail- way wheels, rails and switches within a few seconds. The wheel flats, cracks and spalling are detected and evaluated. During the measurement process, the sen- sor captures the defect. The graphical and acoustic tutor helps thereby by the sensor guidance. After the measurement is completed, the depth and the width of the defect is calculated and displayed on the sensor and tablet PC in a matter of seconds. These values can then be compared automatically with your organiza- tions reference values.

Measured variables:



Measurement method “SlidFLAT”



Measurement method “Spalling”

2 TECHNICAL DATA

Compatibility	CALIPRI C41, CALIPRI C42
Measurement range (WxD)	Wheel flat: 15,0 x 0,1 to 80,0 x 2,0 mm (0.6” x 0.004” to 3.1” x 0.08”) Cracks and spalling: 1,0 x 0,5 to 50,0 x 5,0 mm (0.04” x 0.02” to 2.0” x 0.2”)
Application range	For all common heavy and light rail wheels, rails and switches
Dimensions	Width Depth
Product ID	CMM1007

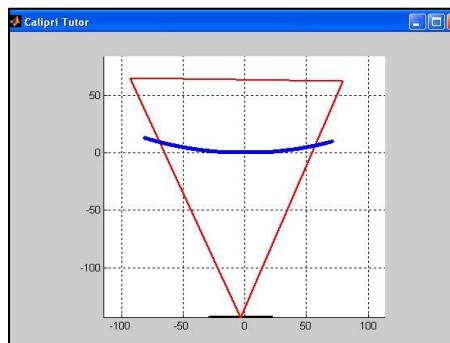
3 SCOPE OF SUPPLY AND SERVICES

- Software license measurement method “Defects“
 - 2 measurement methods (SlidFlat, Spalling)
 - In case of system extension (supplementary order): activation via remote access

4 MEASUREMENT PROCESS



Measurement process

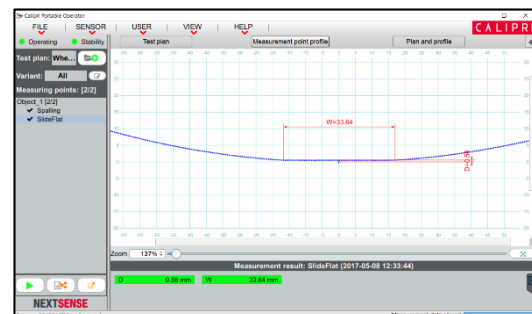


Sensor guidance (Tutor)



Measurement result (Sensor)

AND



Measurement results (Tablet PC)

Offer & Live demonstrations:
sales@nextsense-worldwide.com



HEXAGON

NEXTSENSE

NEXTSENSE GmbH
Straßganger Straße 295, 8053 Graz, AUSTRIA
Phone +43 316 232 400 - 0, Fax +43 316 232 400 - 599
office@nextsense-worldwide.com
nextsense-worldwide.com | hexagonmi.com