

CALIPRI

C4X

CAPTURES
COMPLEX
CONTOURS



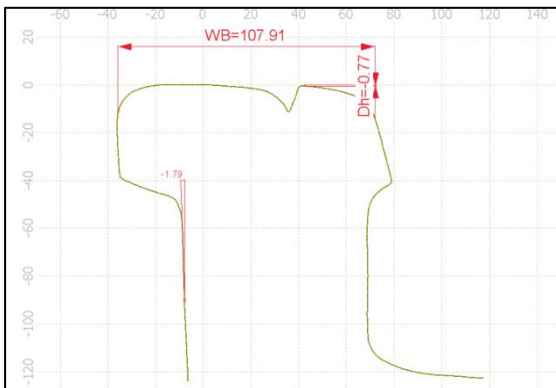
MEASUREMENT MODULE „SWITCH“

Data sheet

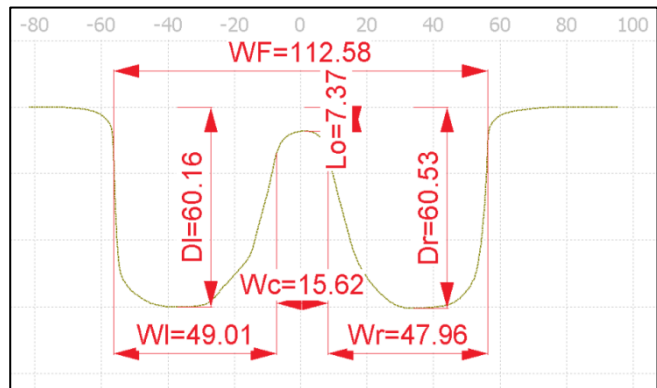
APPLICATION

The “Switch” module is used for precise measurement of switch frogs and switch blades. Important wear values like the lowering of the point of crossing are determined and compared with predefined limit values. An easy to handle and lightweight gauge (carbon fiber) facilitates thereby the sensor guidance.

MEASURED VARIABLES:



METHOD "SWITCH BLADE"



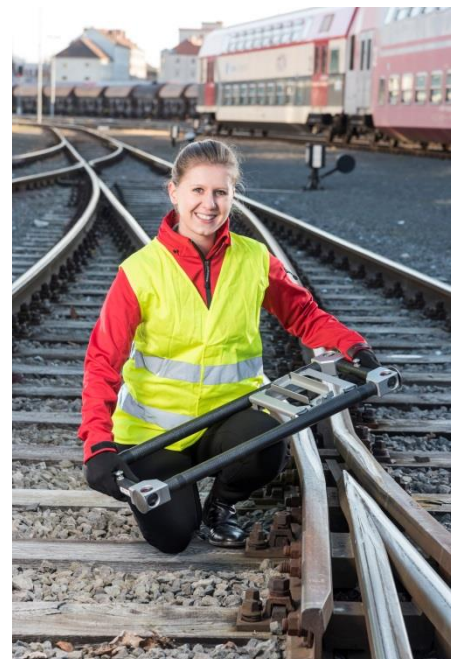
METHOD "SWITCH FROG"

TECHNICAL DATA

SCOPE OF SUPPLY AND SERVICES:

- ✓ Software license for Measurement Module “Switch“
 - Activation through remote access
 - 2 measurement methods (Switch blade, Switch frog)
- ✓ Linear guidance
 - Carbon fiber supporting gauge in hard shell case
 - Replaceable fixture for C40 or C42 sensor

Package size	100 x 20 x 45 mm 4 x 0.8 x 1.8 in
Weight (Linear guidance)	3 kg 6.6 lb
Guided path (Slide)	550 mm 21.6 in
Compatibility	CALIPRI C40, CALIPRI C42
Product IDs	CMM3003/C40 (for Calipri C40) CMM3003/C42 (for Calipri C42)



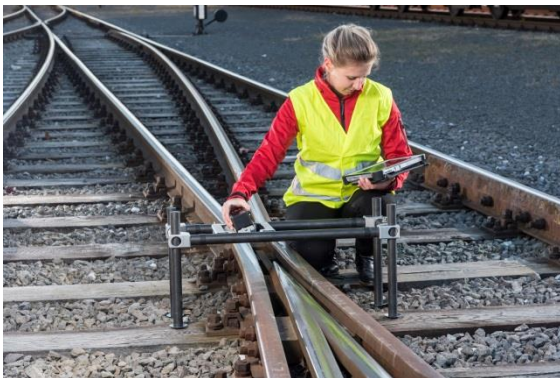
MEASUREMENT PROCESS



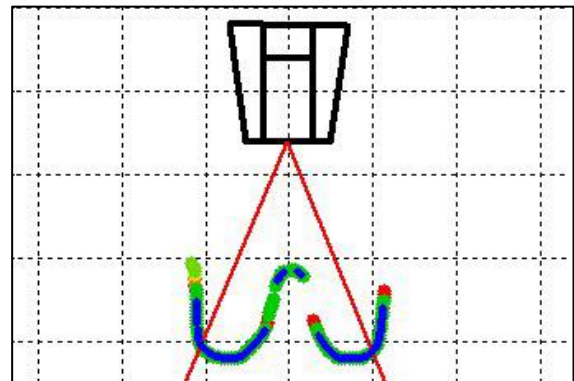
POSITIONING (LINEAR GUIDANCE)



SENSOR FIXTURE (SLIDE)



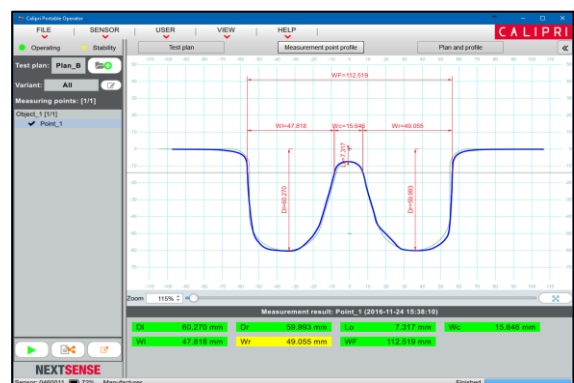
MEASUREMENT



SENSOR GUIDANCE (TUTOR)



MEASUREMENT RESULT (SENSOR)



MEASURED VALUES & PROFILE (TABLET PC)

Offers & Trials:

sales@nextsense-worldwide.com